

# Private Networks in Education



## Improving Digital Literacy with Private 5G

Universities, higher education, K-12, and communities continue to have difficulty getting reliable coverage and network performance across campus with hard-to-reach locations both inside and outside campus.



A stable infrastructure is a must to ensure the safety of students and personnel. **Private Mobile Networks is the answer.**

### CHALLENGES

Educational campuses have long been home to a highly mobile constituency—today's modern student.

Wi-Fi technology issues are well-known by the technology managers and do not provide satisfactory coverage. Wi-Fi provides “portability” and not the “mobility” provided by a private mobile network.

In every campus, there are places where Radio Frequency (RF) blind spots and interference prevail.

Dependence on reliable coverage and mobility are critical requirements for campus wireless.

### THE ALEF SOLUTION

The first [global Edge API Platform](#) that empowers enterprises to create, customize, and control their own private mobile network - in 60 minutes.

Low cost operating models over traditional service providers and approaches.

**Universal • ANY-G  
Programmable APIs**



#### Expand wireless mobility

To those hard-to-reach corners of the campus with dependable carrier-class technologies.



**Less manpower & cost** with the same performance & security inside your firewall



**Improve performance** for latency-sensitive applications



#### Activate in 60 minutes

Enable mobile devices inside the firewall on the enterprise network

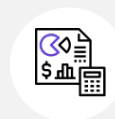


#### Prepare for Edge Compute

Lay the groundwork today for the distributed computing environment of tomorrow.



**Better than cloud** because data is kept local and secure and integrated into the service layer



#### Purchase through budget-friendly subscriptions

Procuring MNaaS aligns expense with consumption.

# Use Case: Building the Connected Campus

## Enhancing the Campus Sports Experience

High speed broadband connectivity to every seat. Video replay on your device, post to social media, text, and order merchandise. New revenue potential – the smartphone is the personal portal for entrance, transactions, alternative viewing, real time communications, and direct marketing before, during, and after the event.

## Targeted Communications

Class notifications, campus weather alerts, new ticket availability, schedule changes - tailored to specific audiences ranging from individual student to class to specific school to entire community.

## The Connected Building

Securely connect and manage BMS to optimize operational costs and staff resources – drive down costs for the smart campus.

## Expanded Security & Monitoring

Easily deploy video cameras without new cabling and view these video streams from any location.

## Economically Extend Existing Wi-Fi

Cover hard-to-reach locations at school vehicles/buses.

## Asset Tracking

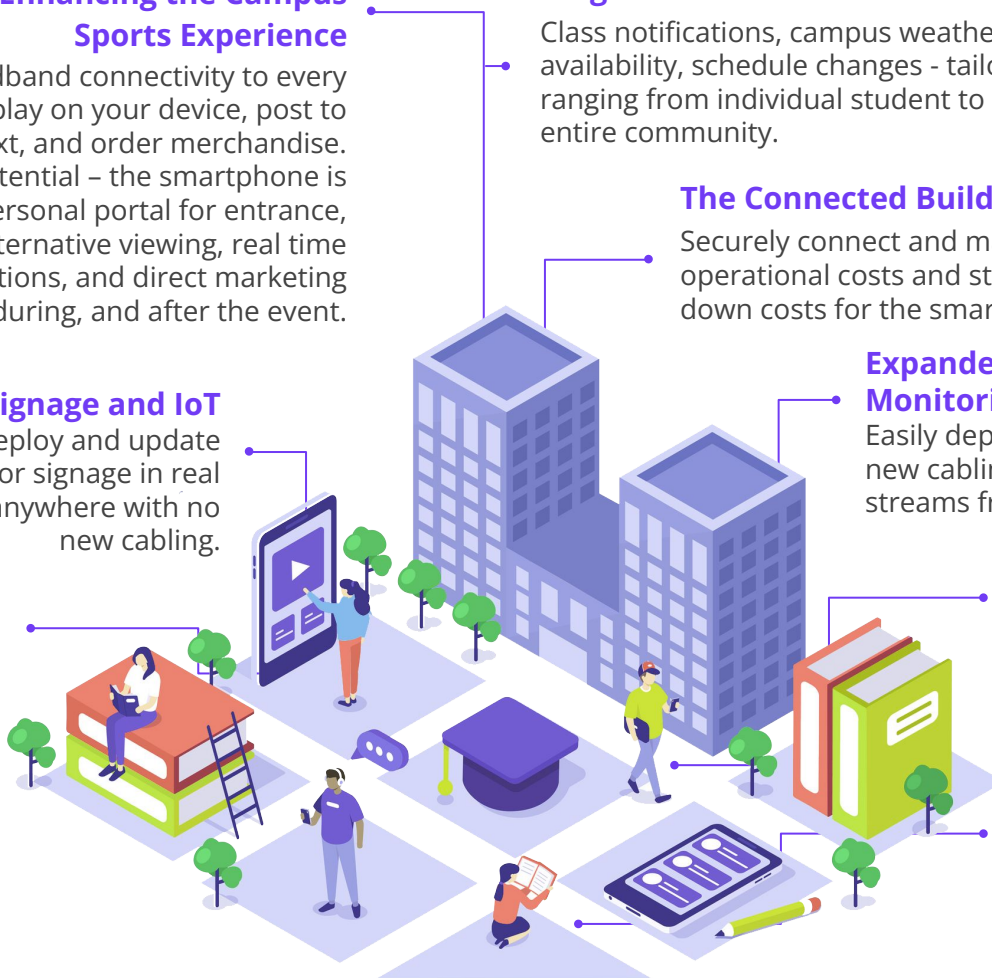
Gain physical awareness of all faculty as they transit across campus, increasing safety for personnel and while in remote campus locations.

## Digital Signage and IoT

Deploy and update indoor/outdoor signage in real time from anywhere with no new cabling.

## First Responders

Enabling first responders with dedicated network capacity at all times.



## Your Funding – Eligible for Federal Programs

Today, there are multiple federal programs dedicated to providing \$Billions to get campus communities better connected and help close the digital divide.

**Private Mobile Networks implement carrier-class dependability and rock-solid mobility—the kind educational network managers and students can depend on.**

## Industry Validation

### VentureBeat

“Alef’s **expertise in APIs**, building strong developer relationships and solid track record of enabling enterprises’ mobile applications with Edge Points serving as the mobile abstraction layer are helping to **create the mobile network-as-a-service (MNaaS) market.**”



“**Simplifying the process of deploying mobile networks** inside the enterprise security perimeter will make it faster and easier for companies to integrate new technologies and applications”